



CVR Polk and Zip Code Update 10-01

Introduction

This bulletin announces an update to your CVR application's Polk tables. Once installed, this file will update your application's R.L. Polk VINA files, which translate the 17-character VIN (Vehicle Identification Number) into Vehicle Model, Year, Make, and Fuel Type on the Registration Data Entry Vehicle page. The Polk update includes the latest VINs for 2010. The latest Zip Code data has also been included in this release.

- The new Polk upgrade can now be installed by a Standard User Account via normal installation (CD or Web) or via Flexnet.
 - The Standard user account must have an EVERYONE entry in the security setting for the Standard user. The EVERYONE entry must have full control over the entire State Root Directory. If this setting is not correctly set up, the ADMINSTRATOR will have to run the install for the user.



- This Security option will also be set for CVR application automatically.

Installation Instructions

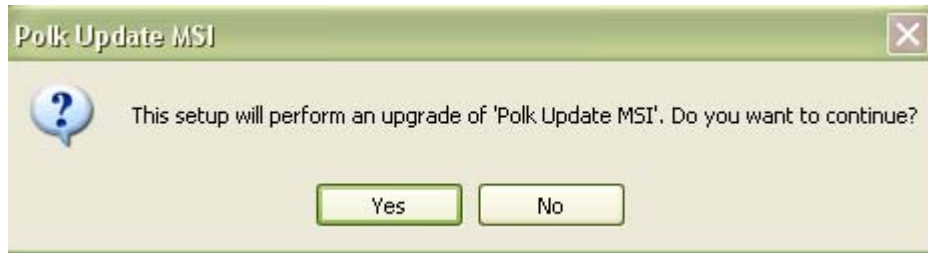
These updates are effective immediately and should be installed as soon as possible. Please make sure all CVR PCs are updated.

CVR applications with the Flex Net utility will automatically download the update and notify you when the installation package is ready. Follow the window prompts.

To install the update from CVR's Client Support website:

1. Close the CVR application, if active.
2. Connect to <http://support.cvrreg.com/polk/download.htm>
3. Click Download Polk and Zip Code Update 10-01.

At the following prompt, click YES to initiate the installation process. Once the download is complete, the application Setup will automatically launch.

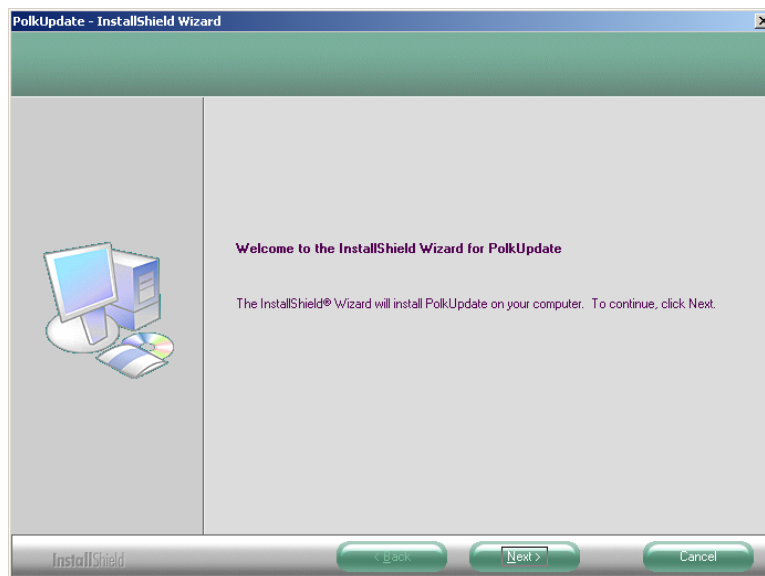


Click the **Finish** button (when displayed) to complete the installation.

For installation from CD-ROM drives:

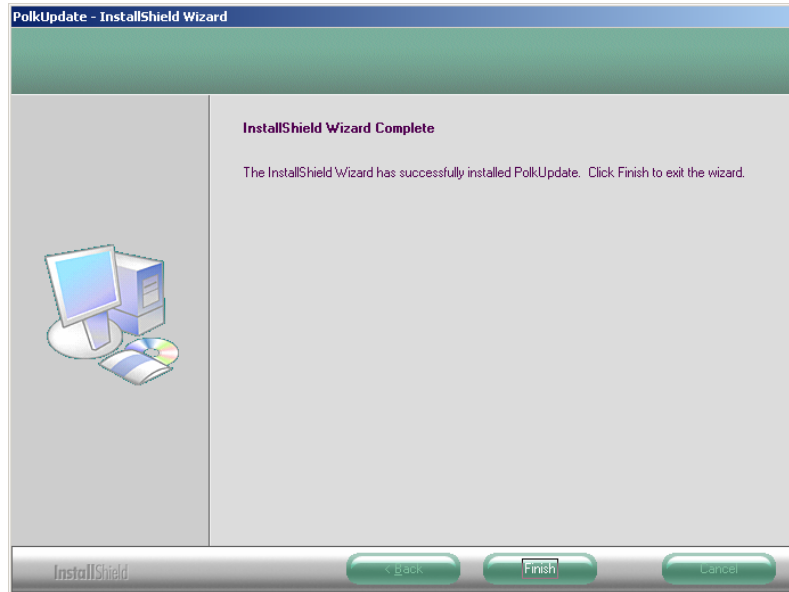
1. Close the CVR application, if active.
2. Insert the CD into your computer's CD-ROM drive and wait for the splash menu to automatically display. From the CD splash menu, click **Install Polk and Zip Code Update** to start the Setup process.

Click **Next** to continue the setup process.



The installation process will take a few minutes to complete.

Click **Finish** to complete the installation.



****If you have any difficulty, please call CVR Support Central at 1-800-333-6995****