



# CVR

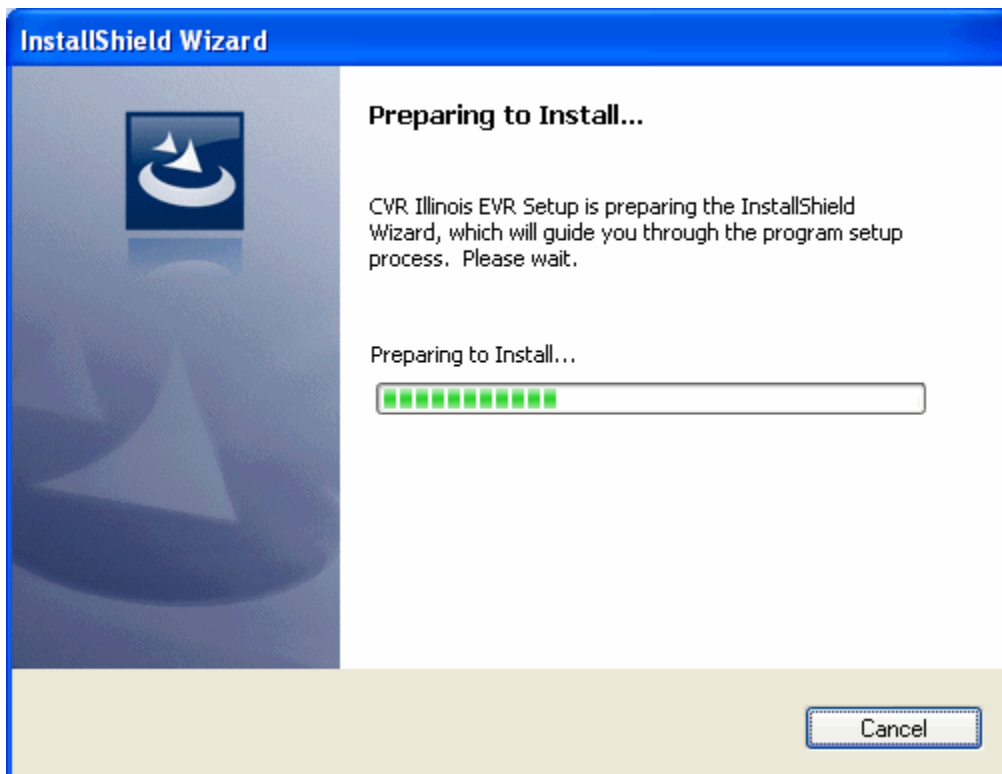
---

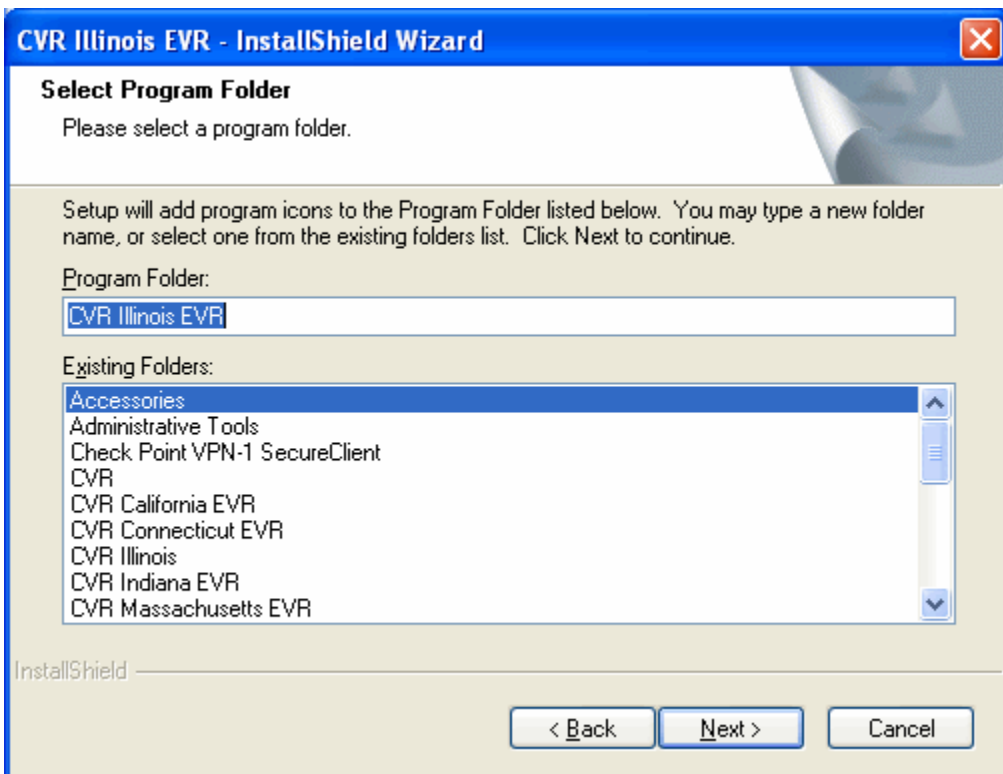
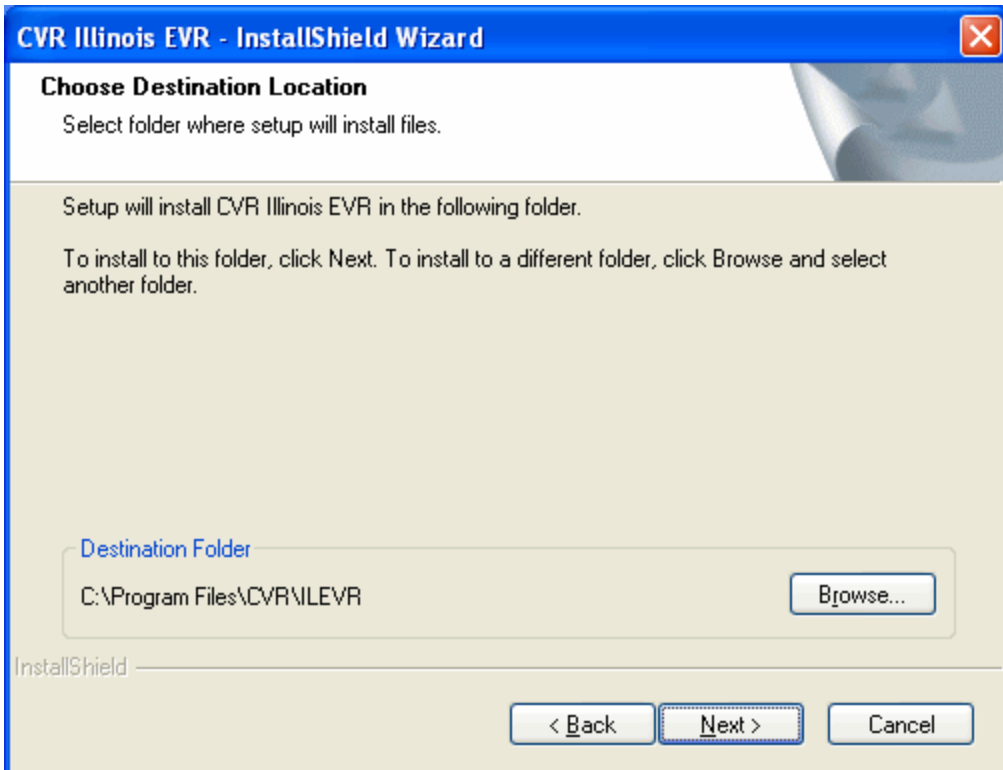
## CVR Release Announcement

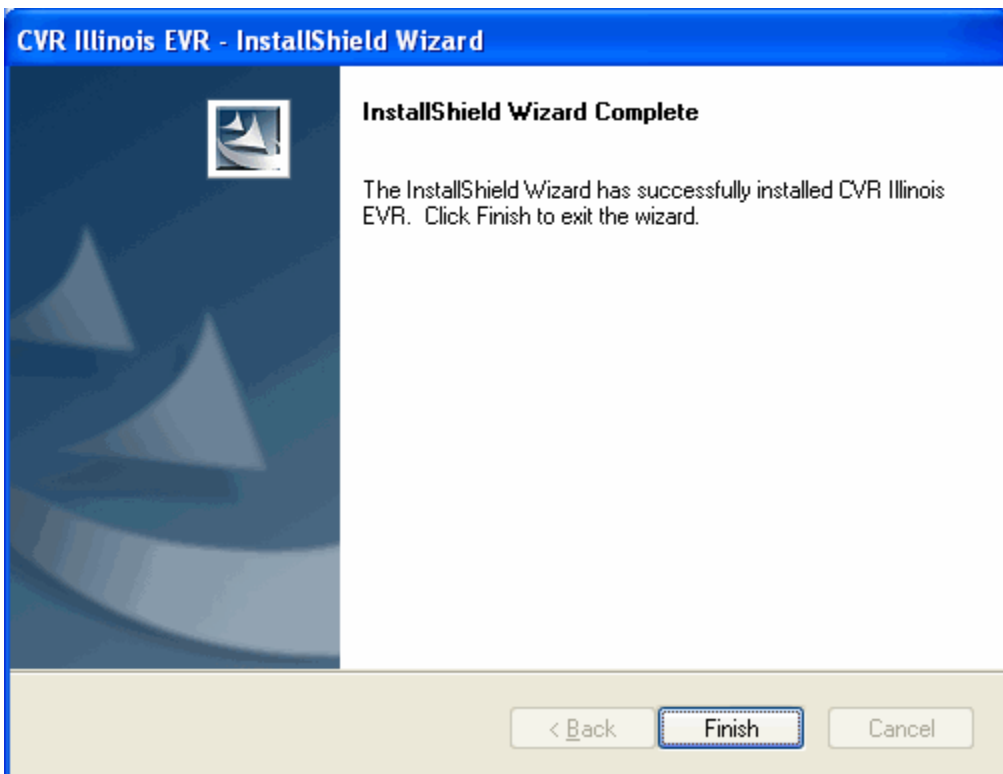
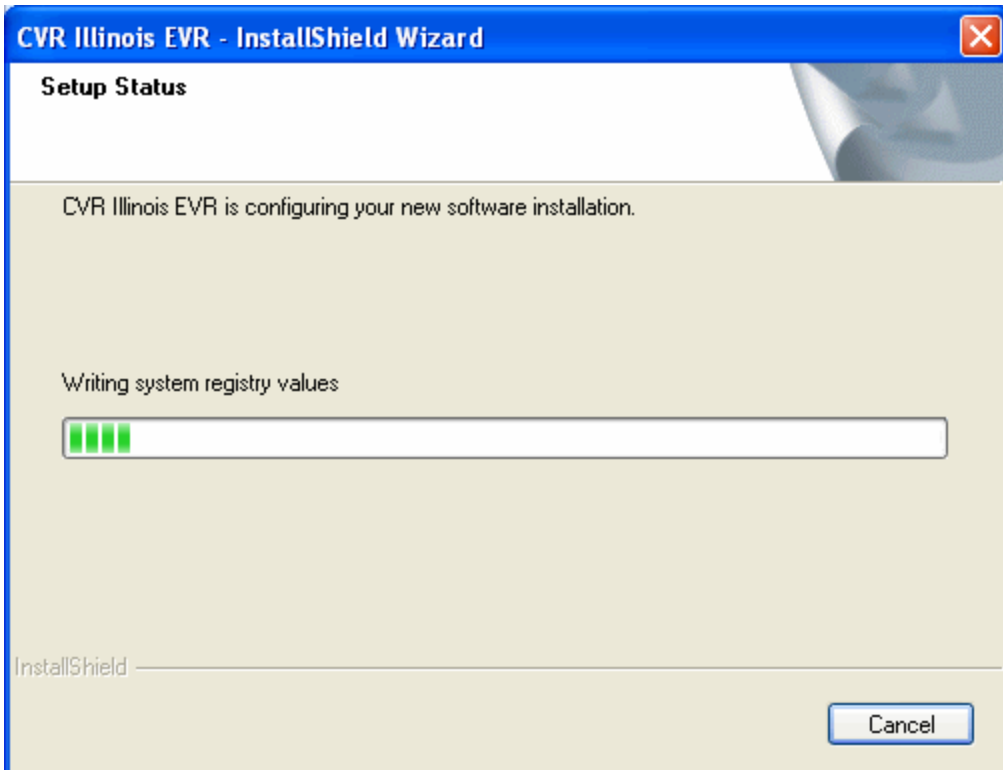
---

### Introduction

This update will replace a security certificate necessary to communicate data. The upgrade steps are listed below. Depending upon the specific version of the CVR IL EVR product being used, some of the steps below may not be displayed.







## Required Installation Date

As soon as possible.

## New Installation

Host will release update.

## System Requirements

- A Pentium II (or better) running *MS XP Pro* operating system.
- A VGA Monitor or better (**Note:** Display resolution should be set at 1024x768 as a minimum in order to display all features of the system).
- Recommend 512 MB of RAM with a minimum of 256MB
- At least 30 MB of available hard-disk space for the program files.
- At least 35 MB of available hard-disk space for database files.
- At least 1 approved laser jet printer:
- An Internet connection using a broadband (high speed) Internet Service Provider (ISP).
- A mouse and a compatible keyboard.
- Microsoft Internet Explorer 6.0 or above.

For further assistance please contact CVR Technical Support at (800) 333-6995